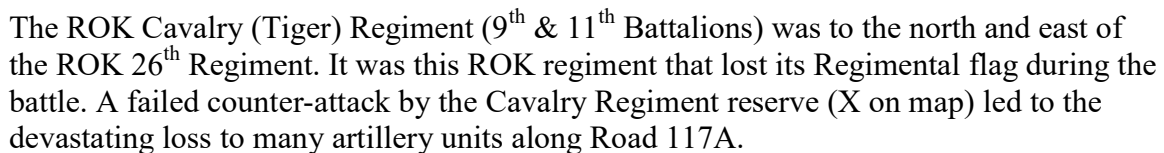


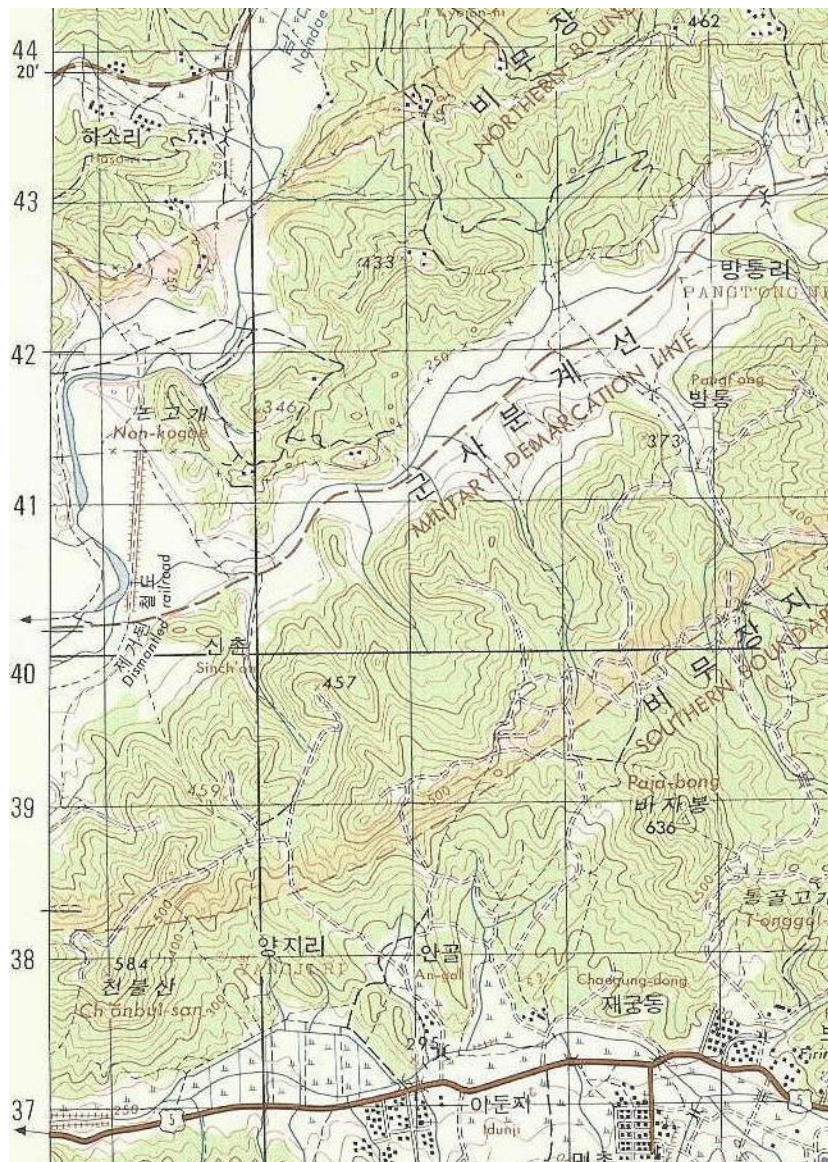
Western side – focus on Hill 433 area



This adapted map (The Korean War – Vol. 3) fails to cite the 15th, 65th and 7th Regiments of the 3rd Division blocking coverage south of Road 117A, in that order, with the 7th right flank along Road 117B. Hill 573 should be 373.



On the left is the ROK Cavalry Regimental Headquarters' flag (of the Capital Division) captured by Chinese Communist Forces. Please note the diagonal slash which represents a cavalry unit. And that the image does not show a white tiger. The other flag is the Headquarters pennant for the US 555th Field Artillery Battalion which also had grievous losses during the battle. Both flags now reside in a Beijing, China military war museum.



This 1991 map shows the same area as the adapted map above citing positions on the night of 13/14 July 1953. Notice changes in road names.



M42 with twin 40mm cannons – what they trained on in Germany.



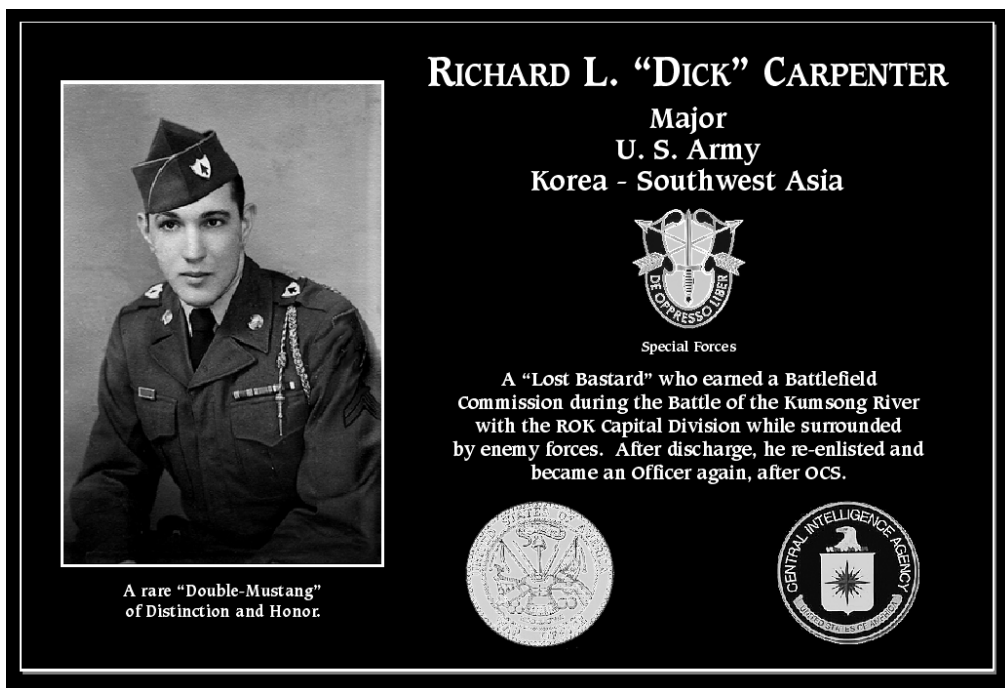
M15 Special with a 40 mm single canon – what they got in Korea.



M16 with a quad 50 caliber machine guns.



Official Wedding photo of Richard L. "Dick" Carpenter & Kunigunda "Gunda" Schuhlein.



Memorial plaque located at Mt Soledad National Veterans Memorial at E Wall, East side, row 1, and plaque 16.



Grave markers for Richard & Gunda Carpenter at Greenwood Cemetery in San Diego, CA.